

*Châlet welcomes you to the perfect urban location. Our five story brick and stucco building was designed to create the ultimate living experience. Enjoy a full service building with rich landscaping, magnificent scenery, breathtaking penthouse views and easy access to major highways, the Long Island Railroad and the historic village of Roslyn.*

### Apartment Features

- Hardwood Floors
- Crown Molding
- Central Heat and Air
- Spacious walk-in and Linen Closets
- Private Balcony or Deck
- Cable TV Access
- Modern Recessed High-Hat Lighting
- Cherry Cabinets
- Microwave and Dishwasher
- Stainless Steel Appliances
- Italian Granite Counter Tops
- Kohler Bathroom Fixtures

### On-Site Amenities

- State of the Art Fitness Center
- Elevators
- On-site Management
- 24-Hour Maintenance Service
- Doorman Building
- Indoor/Outdoor Parking
- On-site Laundry
- High Speed Internet Available

### Community Amenities

- Walking Distance to LIRR
- Prestigious Roslyn School District
- Convenient to Luxury Shopping, NYC and Museums

### Directions to The Châlet

Take L1 Expressway (I-495)  
East to Exit 37  
(Willis Avenue/Mineola Avenue/Roslyn)  
Head North on Willis Avenue/Mineola Avenue  
Turn Right at Warner Avenue  
Turn Left at Edwards Street



## The Châlet

300 Edwards Street

Roslyn, New York 11577

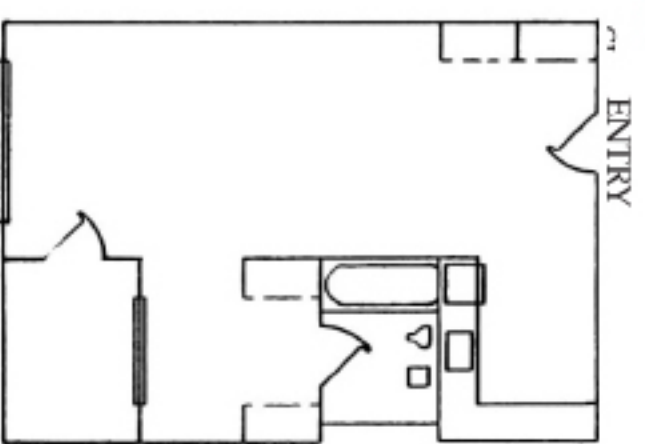
Phone: (516) 621-8040

Fax: (516) 484-5410

## The Châlet

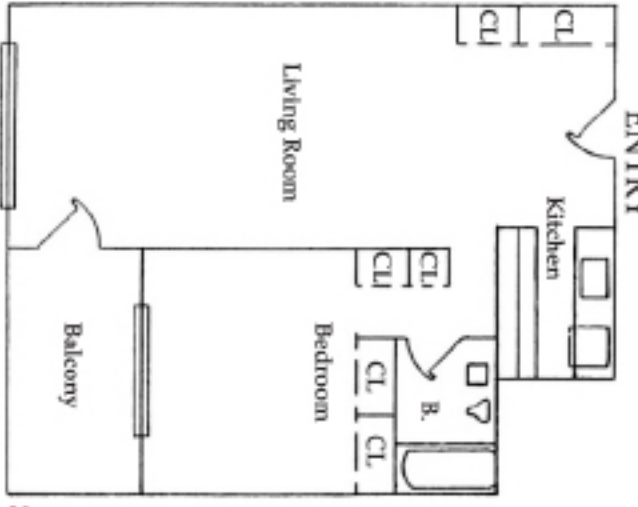
Luxury Apartments

*Studio*



665 ± Sq. Ft.

*One Bedroom*



800 ± Sq. Ft.

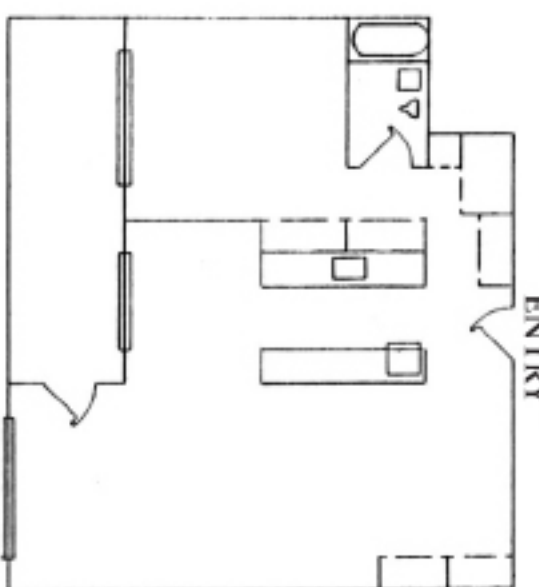
*The Chalet*

*Three Bedroom*



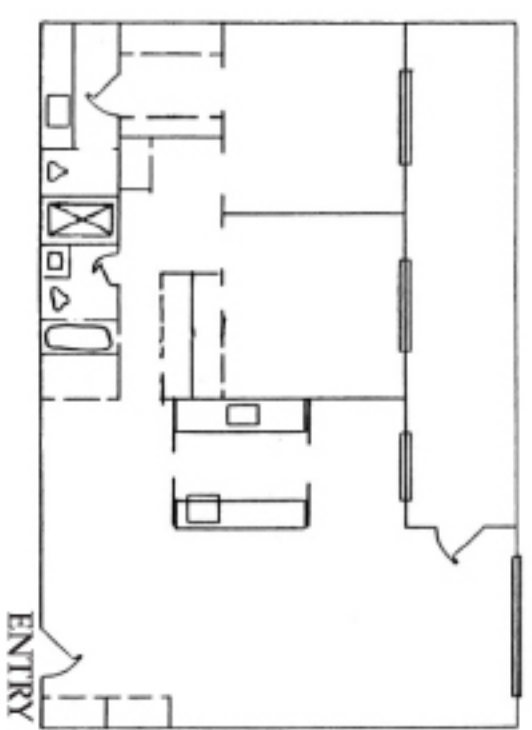
1650 ± Sq. Ft.

*One Bedroom w/ Dining Area*



1100 ± Sq. Ft.

*Two Bedroom*



1400 ± Sq. Ft.